

POD-A PIECE WITH ALL FINISHES, WINDOWS, DOORS, FIXTURES AND FITTINGS WILL BE LOWERED BY CRANE ONTO CRIBBING AND LEVELLED.

THE POD WILL BE ANGLED SO THAT ITS UPPER EDGE IS 6 INCHES FROM THE CORE WHEN IT IS SET DOWN. THIS WILL ALLOW FOR THE UPPER PLENUM OF THE CORE TO BE LOWERED INTO PLACE. WE ARE ABLE TO ACHIEVE THIS ANGLE BY USING ADJUSTABLE FEET WHICH HAVE A RANGE OF 4 INCHES.

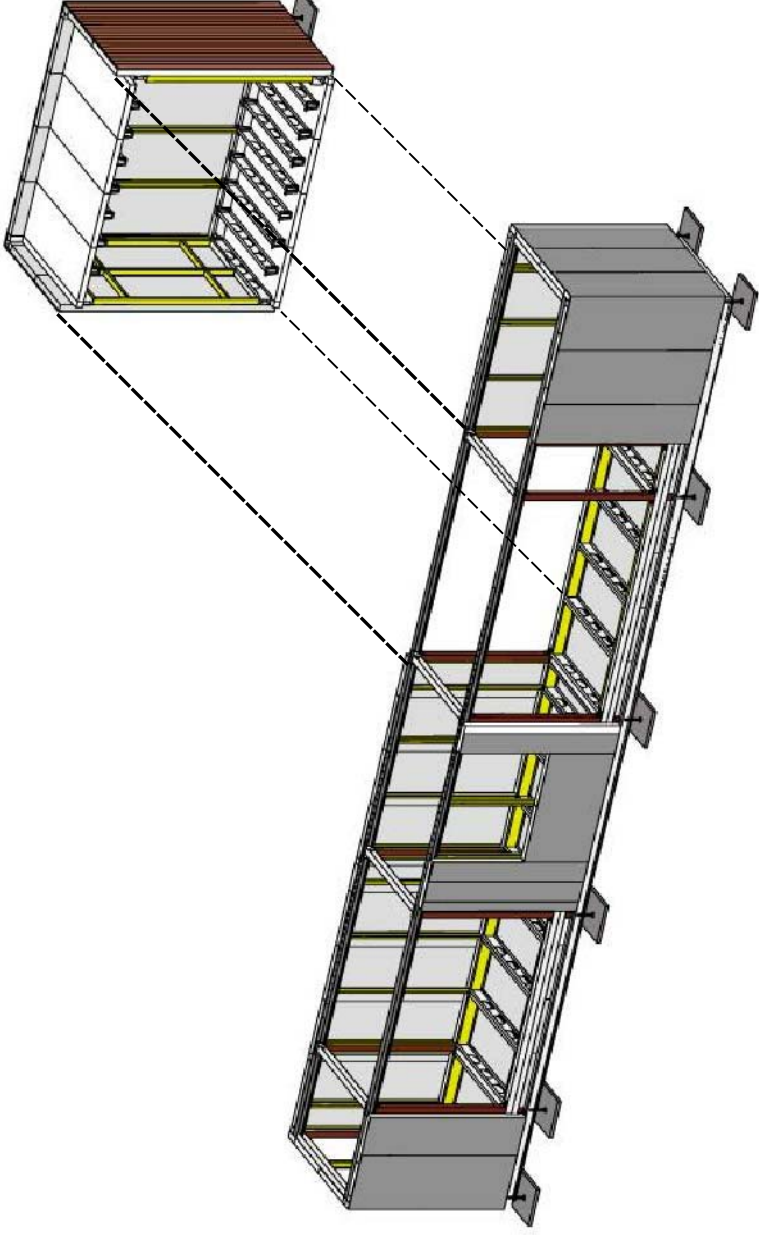
2HRS: 60 TON GROVE CRANE

BOTTOM CORE PIECE WITH ALL FINISHES, WINDOWS, DOORS, FIXTURES AND FITTINGS WILL BE LOWERED BY CRANE ONTO CRIBBING AND LEVELLED.

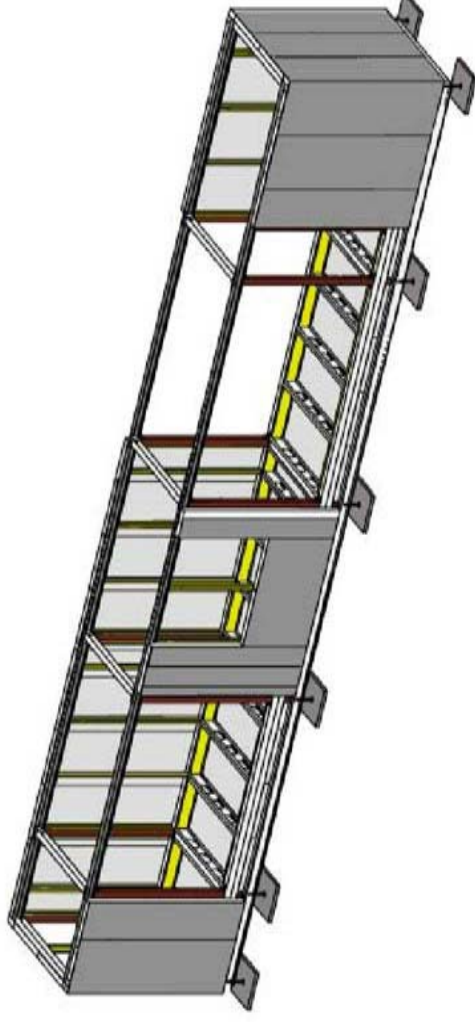
2HRS: 60 TON GROVE CRANE

CONCRETE FOOTING STONES WILL BE LEVELLED

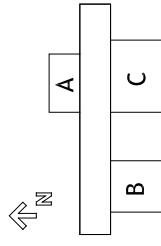
2 HRS: MANUAL LABOR



**2** KITCHEN POD PLACEMENT  
NO SCALE



**1** CORE and LEVELING PLATFORM  
NO SCALE



POD-C PIECE WITH ALL FINISHES, WINDOWS, DOORS, FIXTURES AND FITTINGS WILL BE LOWERED BY CRANE ONTO CRIBBING AND LEVELLED.

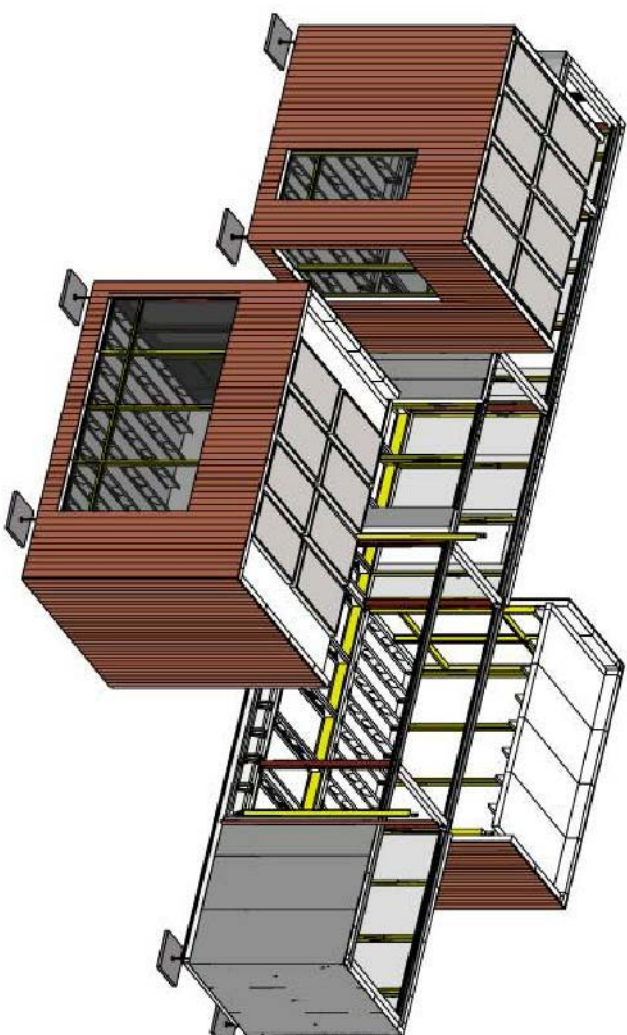
THE POD WILL BE ANGLED SO THAT ITS UPPER EDGE IS 6 INCHES FROM THE CORE WHEN IT IS SET DOWN. THIS WILL ALLOW FOR THE UPPER PLENUM OF THE CORE TO BE LOWERED INTO PLACE. WE ARE ABLE TO ACHIEVE THIS ANGLE BY USING ADJUSTABLE FEET WHICH HAVE A RANGE OF 4 INCHES.

2HRS: 60 TON GROVE CRANE

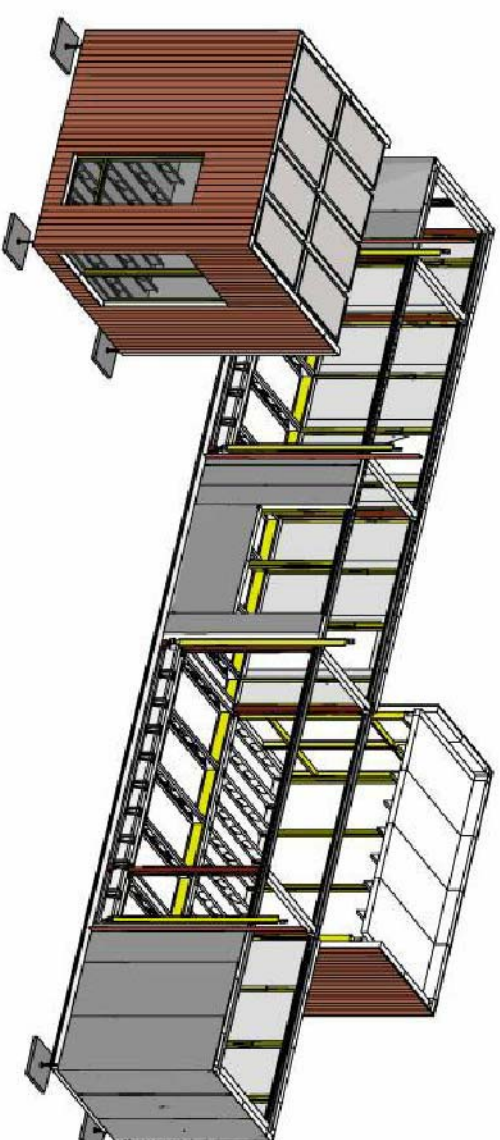
POD-B PIECE WITH ALL FINISHES, WINDOWS, DOORS, FIXTURES AND FITTINGS WILL BE LOWERED BY CRANE ONTO CRIBBING AND LEVELLED.

THE POD WILL BE ANGLED SO THAT ITS UPPER EDGE IS 6 INCHES FROM THE CORE WHEN IT IS SET DOWN. THIS WILL ALLOW FOR THE UPPER PLENUM OF THE CORE TO BE LOWERED INTO PLACE. WE ARE ABLE TO ACHIEVE THIS ANGLE BY USING ADJUSTABLE FEET WHICH HAVE A RANGE OF 4 INCHES.

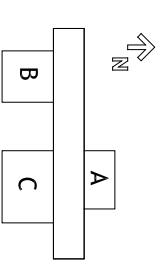
2HRS: 60 TON GROVE CRANE



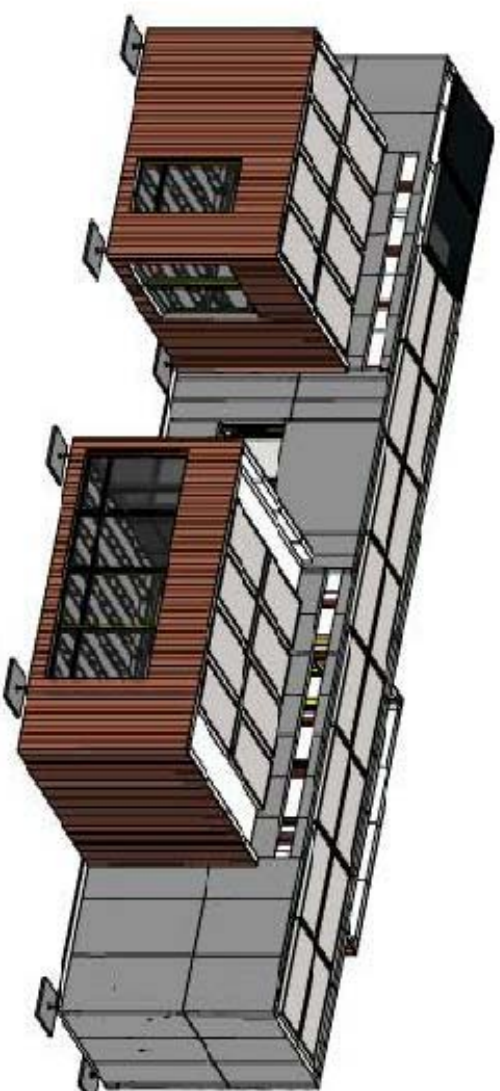
**4** POD-B PLACEMENT  
NO SCALE



**3** POD-A PLACEMENT  
NO SCALE



ALL CONNECTION POINTS WILL BE FLASHED AND SEALED.  
 POD PIECES WILL BE LEVELED USING THE THREADED  
 ADJUSTABLE FOOTERS .  
 2HRS

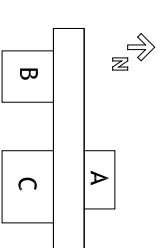


**6** LEVEL and SEAL  
 NO SCALE

UPPER CORE PIECE WITH ALL FINISHES, WINDOWS, DOORS,  
 FIXTURES AND FITTINGS WILL BE LOWERED BY CRANE ONTO  
 THE LEVEL PLATFORM  
 2HRS: 60 TON GROVE CRANE



**5** CORE TOP PLACEMENT  
 NO SCALE



UPPER CORE PIECE WITH ALL FINISHES, WINDOWS, DOORS,  
FIXTURES AND FITTINGS WILL BE LOWERED BY CRANE ONTO  
THE LEVEL PLATFORM

ZHRS: 60 TON GROVE CRANE



**2** CORE TOP DETACHMENT  
NO SCALE

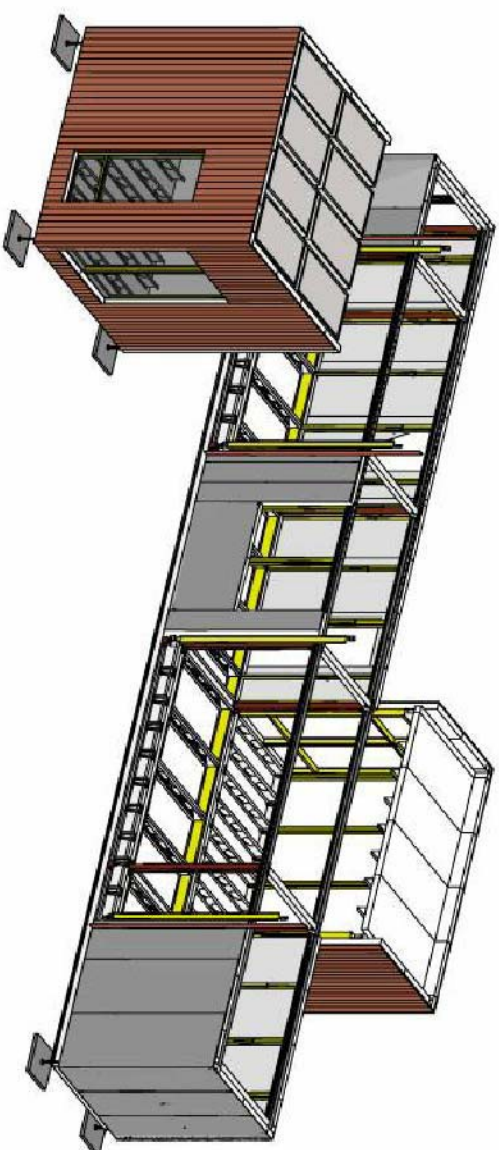
FLASHINGS AND ALL SEALS WILL BE REMOVED.

PODS WILL BE ANGLED ONCE AGAIN 6 INCHES AWAY FROM THE  
CORE AT THE TOP TO LET THE UPPER PLENUM BE REMOVED.  
ZHRS



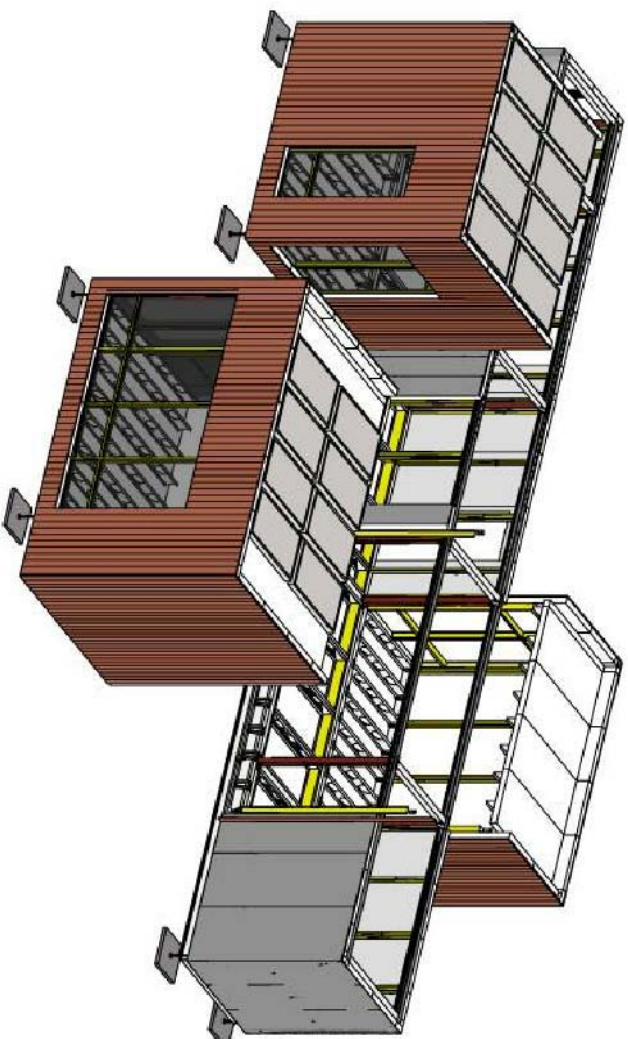
**1** DE-LEVEL and REMOVE SEAL  
NO SCALE

POD-C PIECE WITH ALL FINISHES, WINDOWS, DOORS, FIXTURES AND FITTINGS WILL BE RAISED BY CRANE ONTO THE TRAILER 2HRS: 60 TON GROVE CRANE

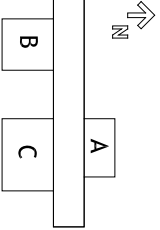


**4** POD-C DETACHMENT  
NO SCALE

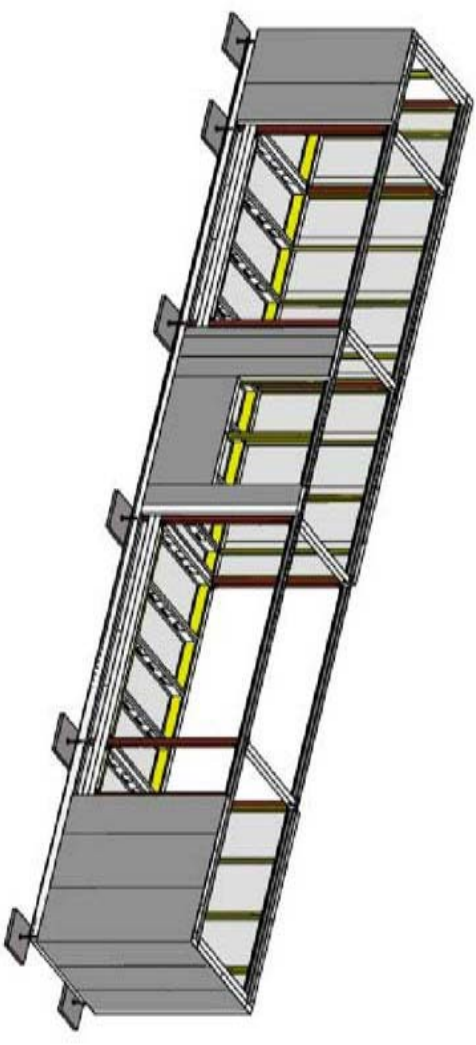
POD-B PIECE WITH ALL FINISHES, WINDOWS, DOORS, FIXTURES AND FITTINGS WILL BE RAISED BY CRANE ONTO THE TRAILER 2HRS: 60 TON GROVE CRANE



**3** POD-B DETACHMENT  
NO SCALE

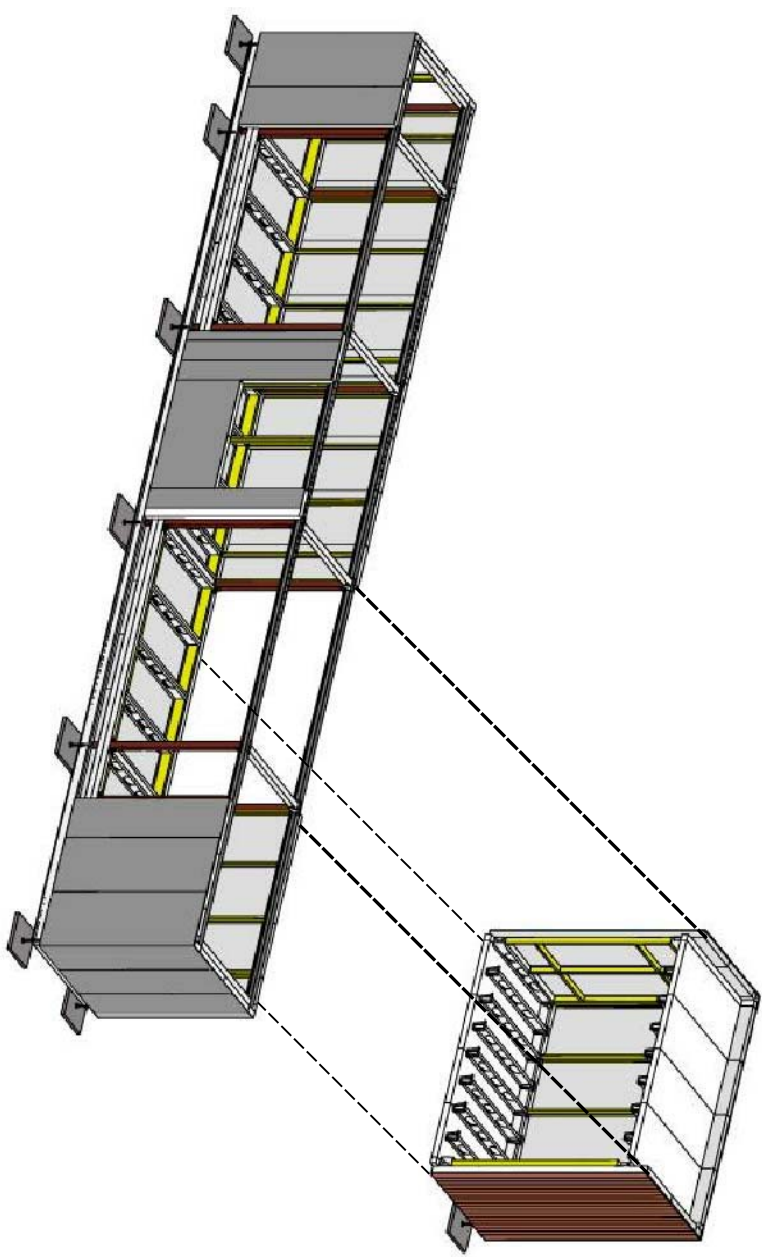


CORE PIECE WITH ALL FINISHES, WINDOWS, DOORS, FIXTURES AND FITTINGS WILL BE RAISED BY CRANE ONTO THE TRAILER 2HRS: 60 TON GROVE CRANE



**6** CORE and LEVELING PLATFORM  
NO SCALE

POD-A PIECE WITH ALL FINISHES, WINDOWS, DOORS, FIXTURES AND FITTINGS WILL BE RAISED BY CRANE ONTO THE TRAILER 2HRS: 60 TON GROVE CRANE



**5** KITCHEN POD DETACHMENT  
NO SCALE

